

Metal Cushion VT1120 - VT1130

Installation in pipe clamp

The elastic cushions are placed circumferentially around pipework providing a compact isolation system allowing both axial and radial expansion. For best isolation result, the clamp is to be made as rigid and heavy as possible.

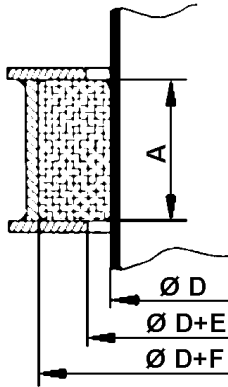
We recommend the installation for the cushions as shown opposite (two half-rings in which the cushions are evenly spaced inside the rings).

Rain proof penetrations should be made with a sealing "hat" as shown in figure A.

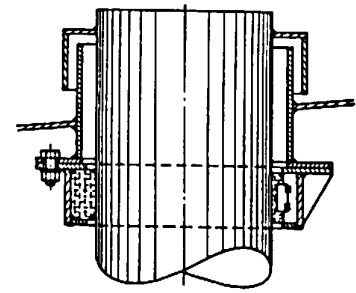
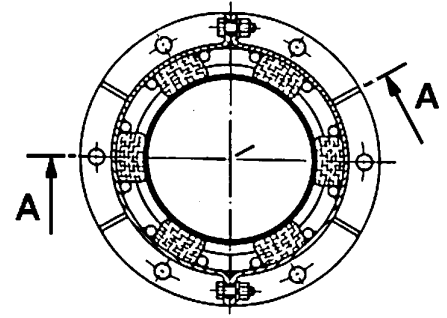
The design of the clamp must allow compression of the cushions because of thermal expansion of the pipe; 10 mm for VT 1110 and 6 mm for VT 1130. The cushions should not be pre-compressed.

The recommended dimensions of the clamp and the number of cushions are shown in the table below.

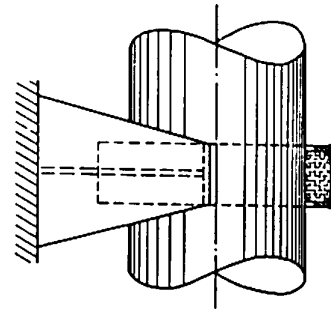
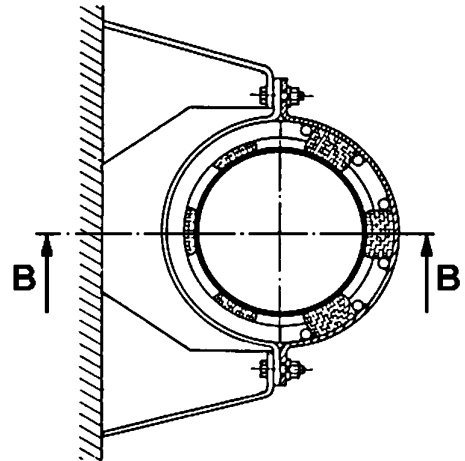
Ref.	A	E	F
VT1110	50	20	50
VT1130	30	12	40



Pipe diameter Ø D (mm)	Qty VT1110	Qty VT1130
50	-	4
100	-	6
150	-	8
200	6	-
300	8	-
450	10	-
650	12	-
850	14	-
1000	16	-
1150	18	-



A - A



B - B

Note

For complete pipe-clamps, refer to VT PC-XXX