

# Metal Cushion VT1120 - VT1140

## Installation in pipe clamp

The elastic cushions are placed circumferentially around pipework providing a compact isolation system allowing both axial and radial expansion. For best isolation result, the clamp is to be made as rigid and heavy as possible.

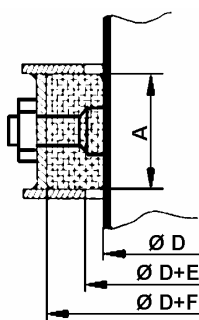
We recommend the installation for the cushions as shown opposite (two half-rings in which the cushions are evenly spaced inside the rings).

Rain proof penetrations should be made with a sealing "hat" as shown in figure A.

The design of the clamp must allow compression of the cushions because of thermal expansion of the pipe; 10 mm for VT1110 and 6 mm for VT1130. The cushions should not be pre-compressed.

The recommended dimensions of the clamp and the number of cushions are shown in the table below.

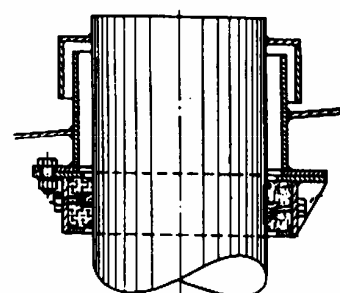
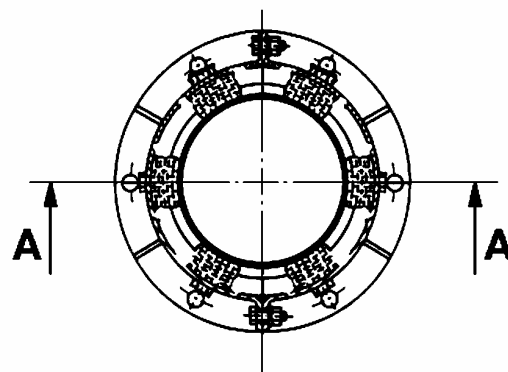
Ref.	A	E	F
VT1120	50	25	9
VT1140	30	20	6



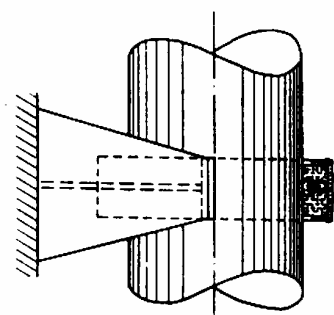
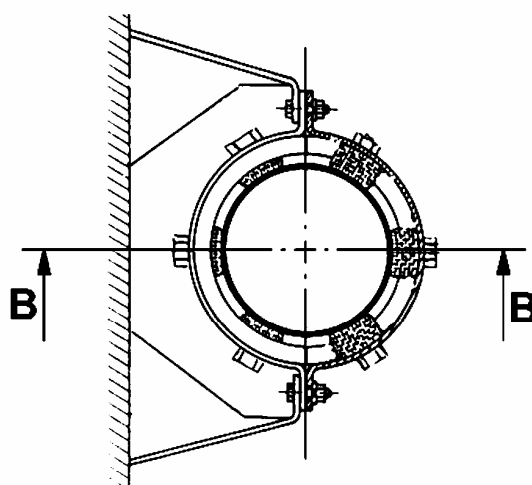
Pipe diameter ØD (mm).	Qty VT1120	Qty VT1140
70	-	4
130	-	6
170	-	8
210	-	10
370	8	-
530	10	-
690	12	-
850	14	-
1010	16	-
1170	18	-
1330	20	-

## Note

For complete pipe-clamps, refer to VTPC-XXX



A - A



B - B