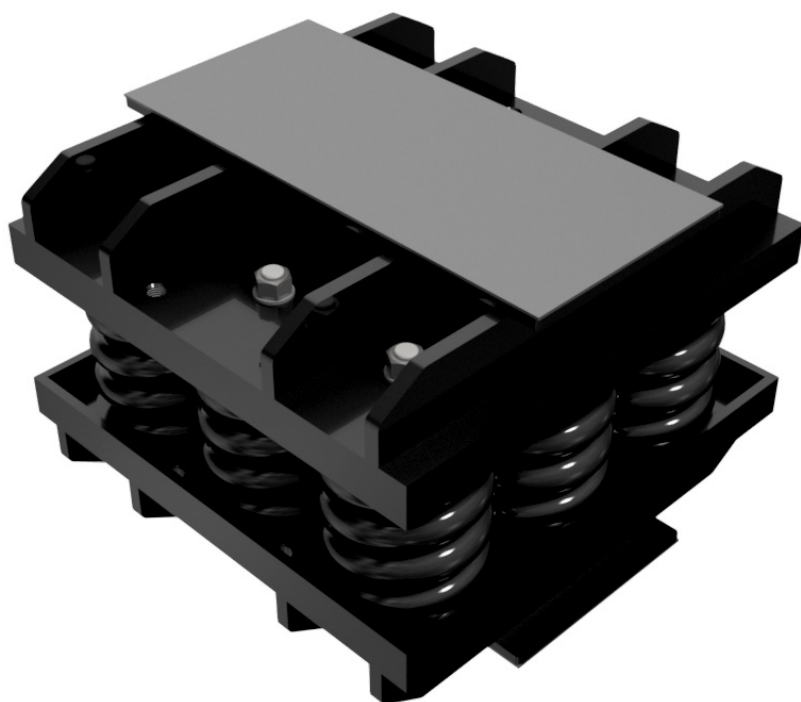


VT4625-B

Pre-compressed Spring Isolator



Vibratec[®]
akustikprodukter

Description

Pre-Compressed Spring Boxes primarily used for vibration isolation of heavy machine foundation and buildings. The VT4625-serie is used where the requirement for resonance frequency is approximately 3,5 Hz. These isolators consist of nested springs inside reinforced steel boxes, and are pre-compressed with a specific load.

The advantages of pre-compressed isolators are:

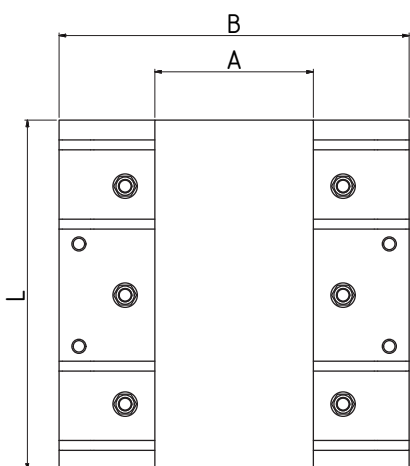
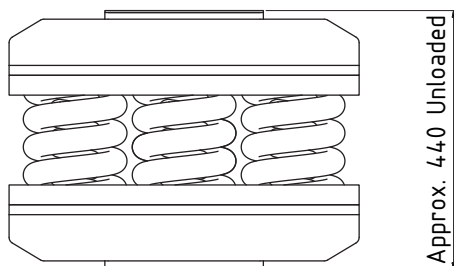
- The springs are pre-compressed to a deflection that equals a certain percentage (normally 80%) of the mass of the final building. During construction the isolator will be “released” once the pre-compression load has been applied, it will thus only deflect when the final 20% of the load is applied.
- Isolators can also be installed after construction or replaced by the use of hydraulic jacks. To achieve this all isolators must be accessible.
- By the use of nested springs the isolators can be fine tuned to a specific stiffness.
- The springs are design to withstand blocking (complete coil contact) without exceeding stress limits and causing plastic deformation.
- To minimize the effect of coil resonance in the springs the contact surfaces in the steel box are covered with an elastomer layer.

Springs in material 51CrV4 manufactured according to DIN 2096.

Finishing: shot peening + black powder coating alternatively Delta Magni Seal

Welded steel structure in mild steel S355 painted with primer and top coat.

Workmanship and tolerances in accordance with ISO 2768-1 Class M.



VT4625-BAXYP

VT46 = serie

25 = max. deflection

BA = box type (2, 4, 6 or 9 springs)

X = number of OUTER springs

Y = number of INNER springs

P = Pre compressed

	L (mm)	B (mm)	A (mm)	Load range (kN)
VT4625-B2	190	360	250	120 - 212
VT4625-B4	360	360	250	200 - 420
VT4625-B6	530	360	250	325 - 635
VT4625-B9	530	530	250	525 - 950

Sweden

Tel: +46 176 20 78 80

e-mail: info@vibratec.se

Norway

Tel: +47 33 07 07 50

e-mail: info@vibratec.no

Denmark

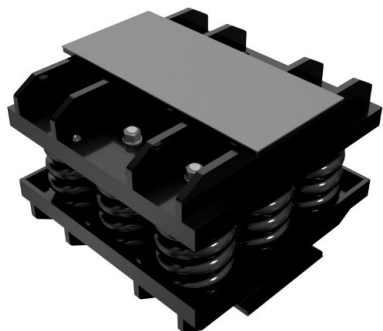
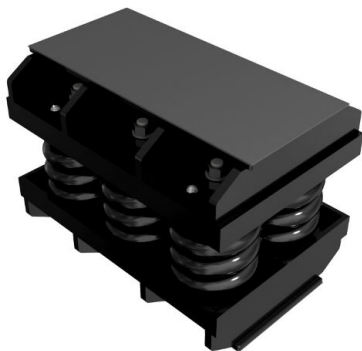
Tel: +45 49 13 22 44

e-mail: info@vibratec.dk

Estonia

Tel: +372 56 66 29 93

e-mail: info@vibratec.ee



Article number	Vertical stiffness (kN/mm)	Max nominal load capacity (kN)
VT4625-B2-20P	6,6	164
VT4625-B2-21P	7,5	188
VT4625-B2-22P	8,5	211

Article number	Vertical stiffness (kN/mm)	Max nominal load capacity (kN)
VT4625-B4-30P	10,0	246
VT4625-B4-31P	10,5	270
VT4625-B4-32P	11,7	294
VT4625-B4-33P	12,7	317
VT4625-B4-40P	13,1	329
VT4625-B4-41P	14,1	352
VT4625-B4-42P	15,0	376
VT4625-B4-43P	15,9	399
VT4625-B4-44P	16,9	423

Article number	Vertical stiffness (kN/mm)	Max nominal load capacity (kN)
VT4625-B6-50P	16,4	411
VT4625-B6-51P	17,4	434
VT4625-B6-52P	18,3	458
VT4625-B6-53P	19,3	482
VT4625-B6-54P	20,2	505
VT4625-B6-55P	21,2	529
VT4625-B6-60P	19,7	493
VT4625-B6-61P	20,7	517
VT4625-B6-62P	21,6	540
VT4625-B6-63P	22,6	564
VT4625-B6-64P	23,5	588
VT4625-B6-65P	24,4	611
VT4625-B6-66P	25,4	635

Article number	Vertical stiffness (kN/mm)	Max nominal load capacity (kN)
VT4625-B9-80P	26,3	658
VT4625-B9-81P	27,2	681
VT4625-B9-82P	28,2	705
VT4625-B9-83P	29,1	728
VT4625-B9-90P	29,6	740
VT4625-B9-91P	30,5	763
VT4625-B9-92P	31,5	787
VT4625-B9-93P	32,4	811
VT4625-B9-94P	33,4	834
VT4625-B9-95P	34,3	858
VT4625-B9-96P	35,3	881
VT4625-B9-97P	36,2	905
VT4625-B9-98P	37,1	929
VT4625-B9-99P	38,1	952

Sweden
Tel: +46 176 20 78 80
e-mail: info@vibratec.se

Norway
Tel: +47 33 07 07 50
e-mail: info@vibratec.no

Denmark
Tel: +45 49 13 22 44
e-mail: info@vibratec.dk

Estonia
Tel: +372 56 66 29 93
e-mail: info@vibratec.ee

**Improving your
enviroment!**